

**A.R.C.
LASER**

enlighten your surgery.

FOX⁵¹⁴
OPHTHALMOLOGY LASER

**ARGON
green**
the original

ARGON
WAVELENGTH

BATTERY
POWERED

MICROSECOND
PULSES

FOX GREEN, 1.5 W

IDEAL FOR:

- ENDOCOAGULATION
- LIO

BACK TO
FUTURE THE

LASER...INNOVATION
MADE IN GERMANY

WWW.ARCLASER.COM

BACK TO THE FUTURE

2



The long history of Photocoagulation

I have experienced all the research from Xenon-Lamp via the argon laser to the KTP-Lasers.

Today the latest so called „Argon“ is as compact as a camera - If I would have known that 43 years ago, we could have saved a lot of work in research and development – That’s Life.



R.Thyzel



A Meditec Dye-Laser



The A.R.C. KTP-Laser in 2009 with 532 nm

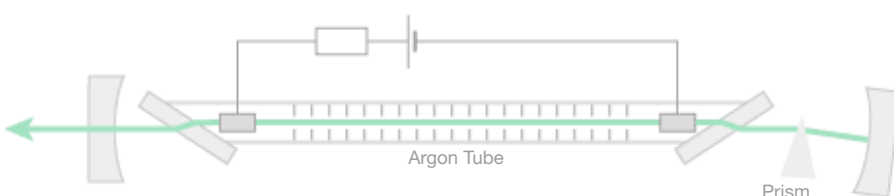


Our new FOX 514 nm ENDO

The picture shows the Dye laser with all the colors from green to yellow to red. The housing dimensions have decreased significantly, the systems have been effective and have become established in clinical therapy.

The “second generation” KTP lasers substituted the argon wavelength (514 nm). These lasers became more affordable, and were soon appearing in community hospitals and even physicians’ offices.

The refinement of technology in medical lasers have made it possible to treat conditions previously considered untreatable, or difficult to treat. Patients benefit by improved results and less cost. Our new ENDO (1.5 Watt, cw) features microsecond pulses.



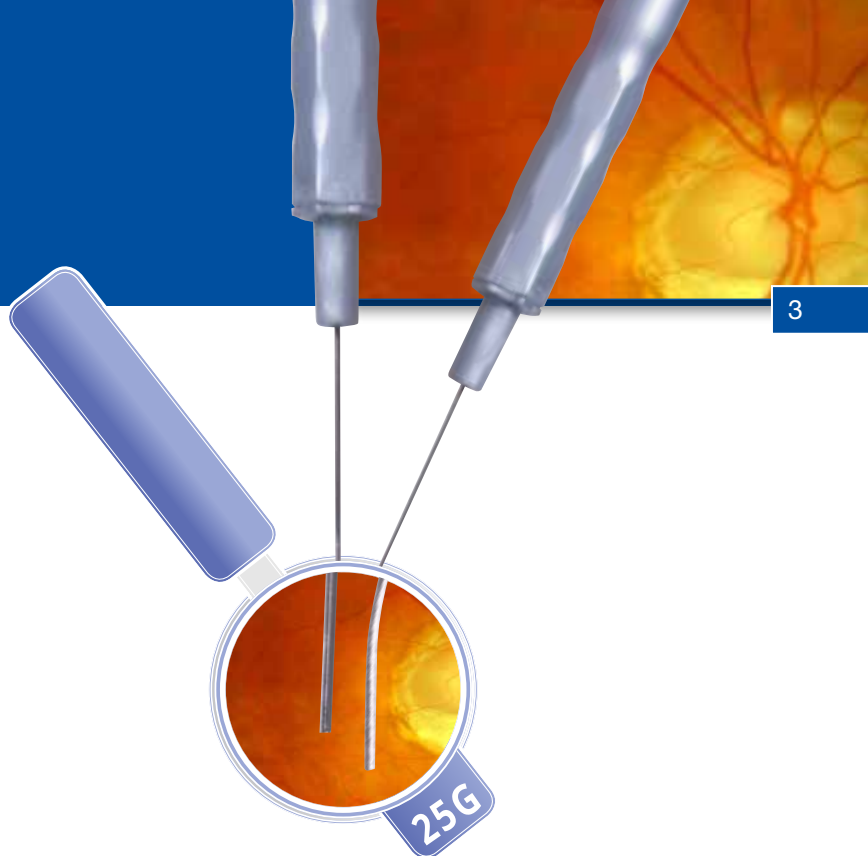
Microsecond pulses promise to become gold standard

”

Already in 2007 first positive effects of microsecond pulses with diode lasers have been observed on the visual acuity and the absorption of a Retinopathia centralis serosa. Further studies and a longer follow-up were necessary to evaluate this technique.

“

Klin Monatsbl Augenheilkd 2007; 224 - KV64
DOI: 10.1055/s-2007-1004503 (translated)



SINGLE USE ENDO PROBES

- Reliable power transmission
- Homogenous power distribution
- Single use

Ideal for the surgical use at diabetic retinopathy, retinal tear and retinal detachment. Our endo-probes – your safety.



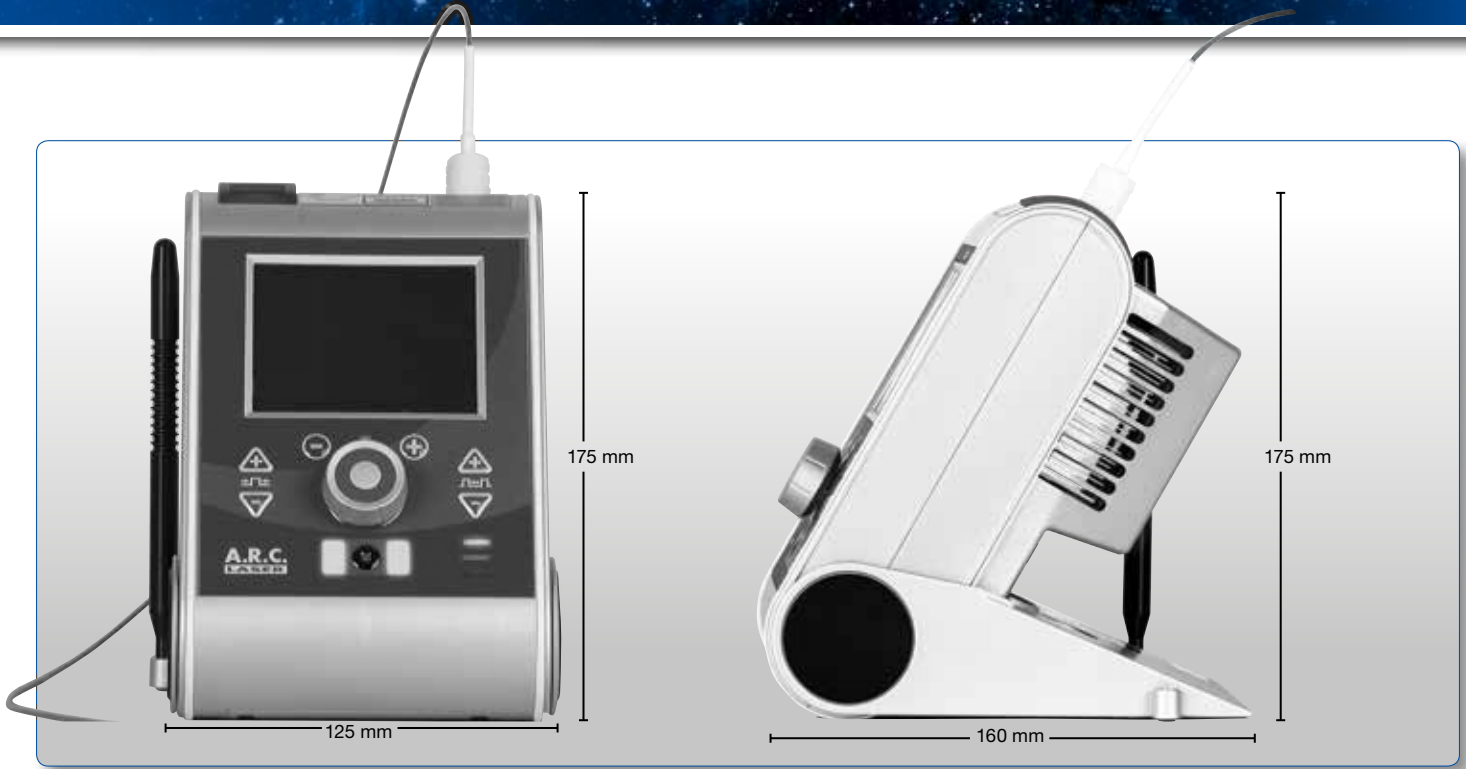
ENDO-Probes single-use		
20 G	straight	LL13009s
21 G	straight	LL13011s
	curved 30°	LL13014s
23 G	straight	LL13006s
	curved 30°	LL13025s
	FLEX-Endo	LL11057s
25 G	straight	LL13010s
	curved 30°	LL13015s

Universal hand pieces

No matter which system you are going to work with: FOX, CLASSIC or ENDO, our hand pieces are easy to use with all those laser system. The patented fiber click-system allows full compatibility.



BACK TO THE FUTURE



THINK SMALL
 REDUCE TO THE MOST NECESSARY
 GO BATTERY POWERED
 ADD MORE FREEDOM TO YOUR OR

LASER INDIRECT OPHTHALMOSCOPE (OPTION)



SPECIFICATIONS

Laser	514 nm (Argon-green)
Output power*	1.5 Watt max.
Pulse length	1 ms to cw
Pulse interval	100 ms to 1,000 ms
Frequency	1 to 9 Hz
Aiming beam	635 nm, < 1 mW
Foot print (HWD)	175 x 125 x 160 mm
Weight	1.2 kg
Power supply	90 - 230 VAC / Battery powered
Fiber attachments	1 Endo-Fiber-Port
Accessories opt.	LiO / Endo Probes

* at laser head.
 The device and the delivery system is protected by one or more patents.
 Technical data may change without notice.

