

A.R.C.
LASER

enlighten your surgery.

FOX
SURGICAL DENTAL LASER

TruBlue

HIGH EFFICACY IN
NON CONTACT

LOW NECROSIS

BLOOD FREE



FOX blue

IDEAL FOR:

- GINGIVECTOMY
- GINGIVAL CONTOURING
- FRENECTOMY
- FIBROMA REMOVAL
- INCISION / EXCISION
- IMPLANT RECOVERY
- SURGICAL CUTTING

- Fast and Clean Cutting
- Minimal Thermal Damage
- Great Ablation combined with total Hemostasis
- Fast Healing, less pain





4th
Generation
FOX Diode Laser



FOX TruBlue – PERFECT SOLUTION FOR PERFECT CUTTING

The FOX gives you amazing treatment results for dental surgery and reduce post-operative pain to a minimum hemostasis. This portable battery running diode laser is qualified for ablation, vaporization, excision, incision, hemostasis and coagulation of soft tissue. Blue laser light allows a high absorption in superficial soft tissue: Ideal for incisions.

Ergonomically designed hand pieces enables surgeons multiple treatment options. With the patented fiber connector, fiber change is quick and easy without compromising performance.

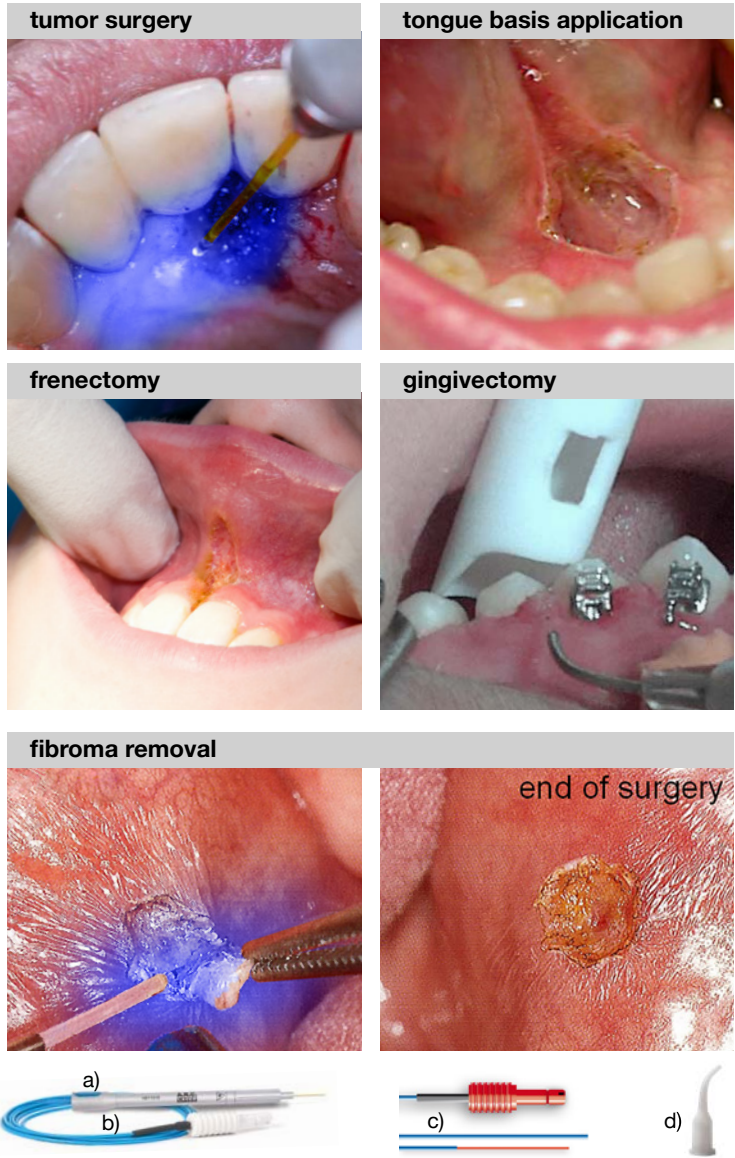
A selection of disposable or reusable attachments are available.



Surgery hand piece with bare fiber

FOX DIODE LASER

- battery operated
- bright green aiming beam
- Light-weight
- different fiber dimensions: 200, 300, 400 or 600 µm
- hand pieces for multiple application
- affordable consumables



The surgery package consists of: a) surgery handpiece, b) bare fiber 300 µm, c) bare fiber 200 µm, d) 10 x fiber tips



FOX Dental

SPECIFICATIONS FOX TruBlue

laser	445 nm
power	4 W*
pulse width / adjustable	1 ms to cw
pulse interval	1 ms to cw
aiming beam	green 532 nm, < 1 mW
power requirements	V: ~100-240 Hz: 50/60, integrated batteries
dimensions (wdh)	140 x 159 x 174 mm
weight	1.37 kg
laser class	4 445 nm, P = 5.2 W
aiming beam	2 635 nm, P < 1 mW